

# IWAI CANAL BRANCHES/WI MEETING

## EASTERN METRO REGION OVERVIEW

### Regional Manager-Area of Responsibility



### Senior Engineer-Area of Responsibility

- Royal Canal Metro & Naas & Corbally Branch (Senior Engineer Mervyn Hamilton).
- Grand Canal Metro (Senior Engineer John Jones)
- Dublin Metro (Temporary Senior Engineer Paul Kealy)

# IWAI CANAL BRANCHES/WI MEETING

## ROYAL METRO NAAS UPDATE

---

### Ongoing/planned works

- Grass Cutting, Hedge Cutting (Banks)
- Weed Cutting (Channel)
- Naas Rally Preparation & Facilitation
- Fencing Corbally Branch
- Commenced Bank Repairs Corbally Harbour
- Overflow re-build Corbally Branch
- Lock gate Manufacture-Lock 2 Breast Gates
- Ashtown/Broombridge Towpath Repairs 11.24

### Greenways/Other 3<sup>rd</sup> Party Works

- Leixlip-Maynooth 8km, Spring 2025
- North Strand Rd-Phibsboro 2km Spring 2025
- Phibsboro-Ashtown & Castleknock-Confey Planning
- Naas-Sallins (KCC Road Closed to Traffic)
- DART+ West
- Rathborne Development Landscaping

### Operational Restrictions

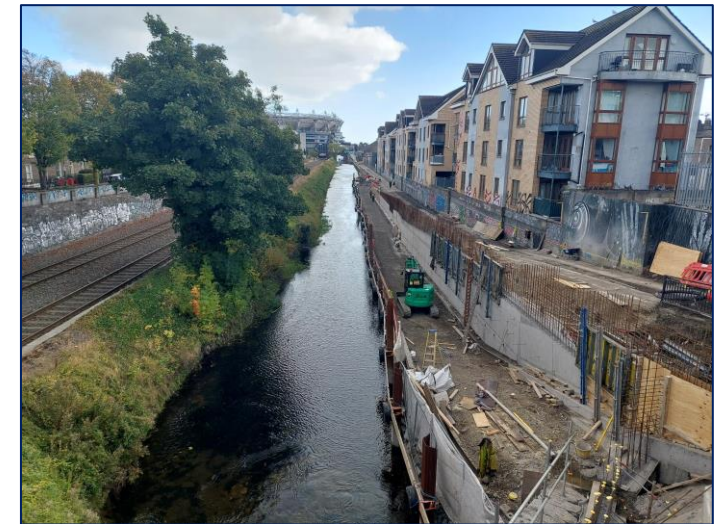
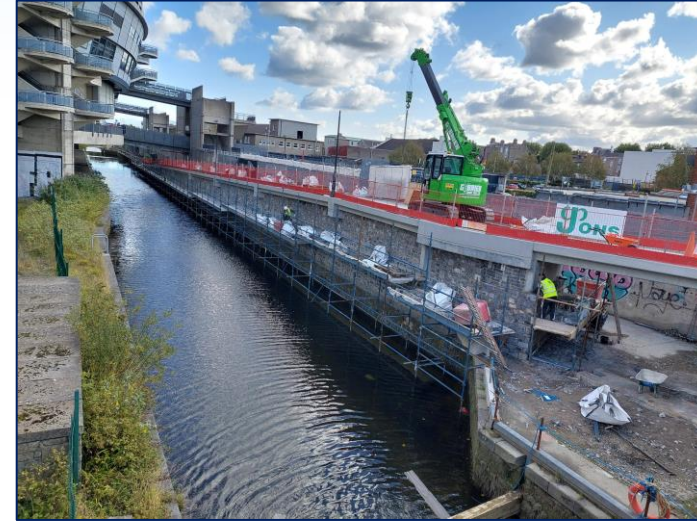
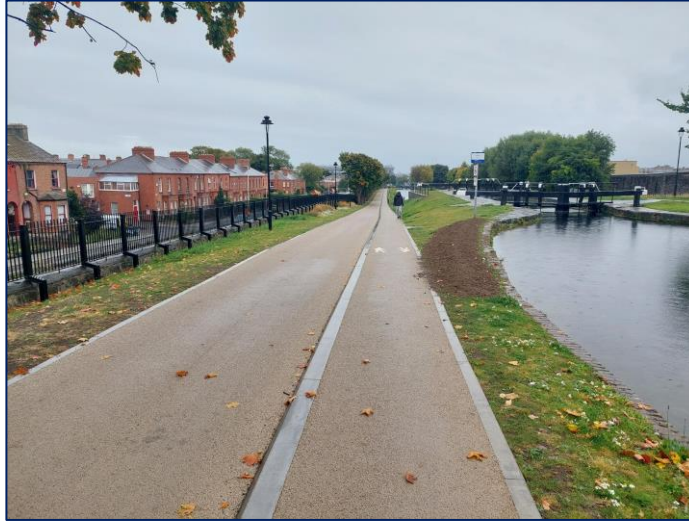
- Lock 10, Newcomen



# IWAI CANAL BRANCHES/WI MEETING

## ROYAL METRO NAAS UPDATE

### GREENWAY CONSTRUCTION





# IWAI CANAL BRANCHES/WI MEETING

## ROYAL METRO NAAS UPDATE

### GREENWAY CONSTRUCTION





# IWAI CANAL BRANCHES/WI MEETING

## ROYAL METRO NAAS UPDATE

### IAN BATH MEMORIAL





# IWAI CANAL BRANCHES/WI MEETING

## ROYAL METRO NAAS UPDATE

### NAAS BOAT RALLY



# IWAI CANAL BRANCHES/WI MEETING

## GRAND METRO UPDATE

---

### Ongoing/planned works

- Grass Cutting, Hedge Cutting (Banks)
- Weed Cutting (Channel)
- Litter picking/Leaf Blowing
- Fencing Repairs/Seating Repairs
- Tree Removal Works Circular Line (Dec/Jan)
- Camden Lock Refurbishment (Gate  
Design/Manufacture/Delivery/Installation/M&E)
- Robertstown Culvert Repair/Replace (Dec-MN)
- Lock Inspection Programme (AM 2024-PI)

### Greenways/Other 3<sup>rd</sup> Party Works

- 12<sup>th</sup> Lock to Hazelhatch Greenway to  
commence 12.24
- Developments adjacent to the canal

### Operational Restrictions

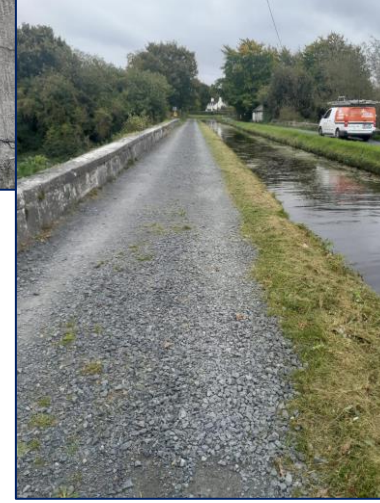
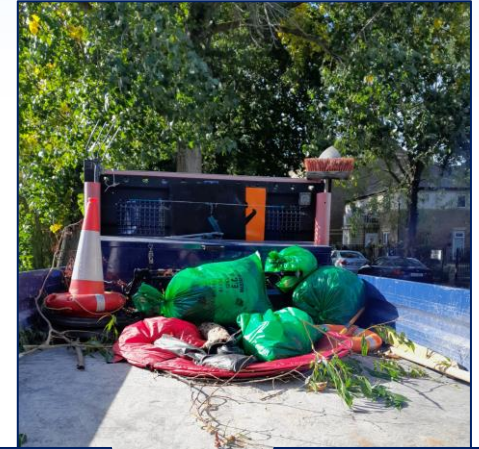
- Lock 15 Grand Canal



# IWAI CANAL BRANCHES/WI MEETING

## GRAND METRO UPDATE

### HEDGE CUTTING/ CLEANING

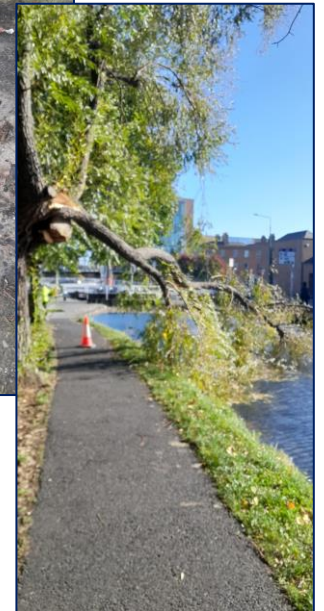
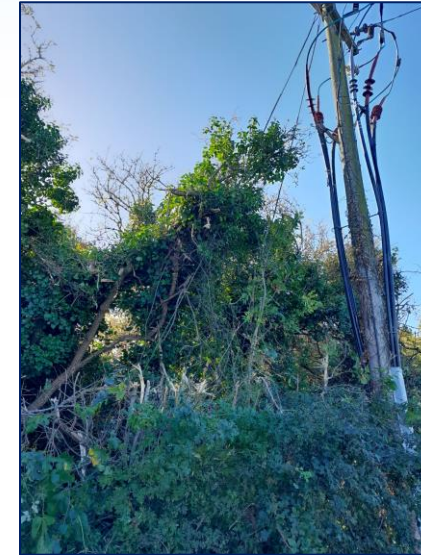




# IWAI CANAL BRANCHES/WI MEETING

## GRAND METRO UPDATE

DAMAGE/FENCING  
/HEDGE CUTTING





# IWAI CANAL BRANCHES/WI MEETING

## GRAND METRO UPDATE

RE-OPENING THE  
AMENITY

Grand Canal Dublin  
Update

